



\$ 225,000

407 Circle Dr, Stowe, PA 19464

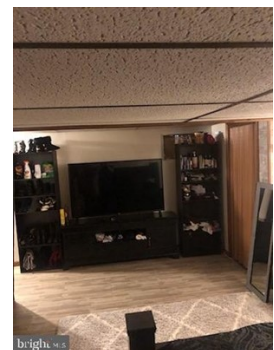
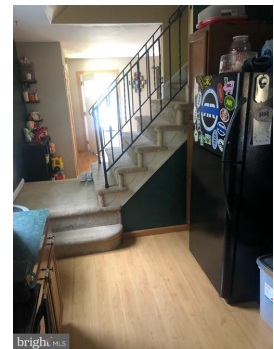
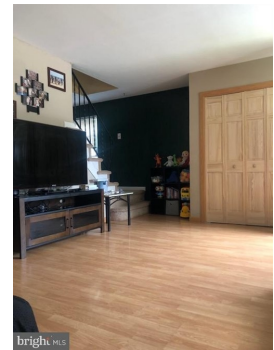
- » Beds: 3 | Baths: 2 Full
- » MLS #: PAMC2072130
- » Condominium | 1,280 ft² | Lot: 4,900 ft²
- » More Info: 407CircleDr.IsForSale.com



Terri Keeler
 Tim Keeler
 (215) 664-7224 (Office)
 (215) 852-5865 (Mobile)
terri@realtyworxpa.com
<http://www.realtyworxpa.com>



Realty Worx
 325 Sentry Parkway
 Bldg 5W Suite 200
 Blue Bell, PA 19422
 (215) 664-7224



Remarks

SUPER AFFORDABLE West Pottsgrove twin nestled on a private cul de sac. Walk in the door to an inviting open floor plan with spacious living room dining room. The eat-in kitchen is bright and cheery with doors leading to an recently upgraded deck, where you'll love spending lazy summer days and evenings enjoying family and friends. The fenced back yard has a brand new shed and is large enough to spread out and design your landscape. Up the steps to the 2nd floor you will find a generous sized master bedroom with it's own private bath, a hall bath and 2 additional bedrooms. As if that weren't enough there's a finished basement perfect for watching the game or for a playroom or media room. This home is well maintained and easy to love. Don't miss this one!

